



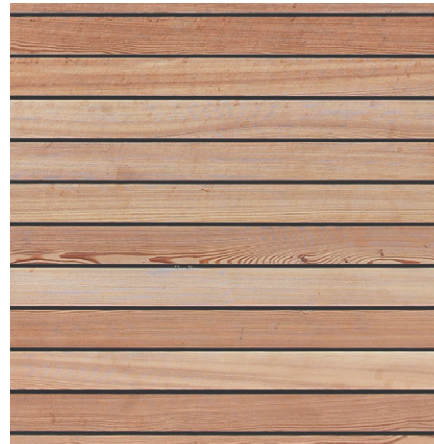
1. STONE WATERTABLE



2. BRICK - TYPE D



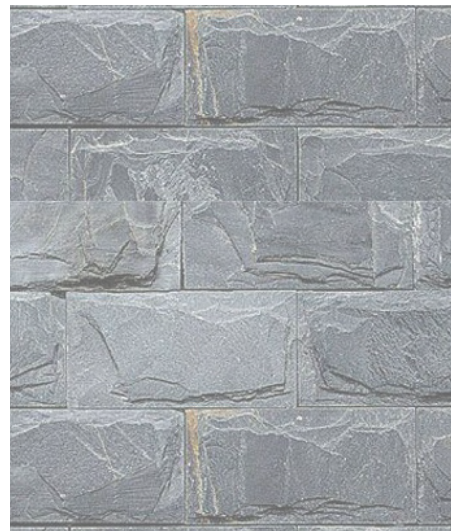
3. CUSTOM LOUVER/
SHADE SYSTEM



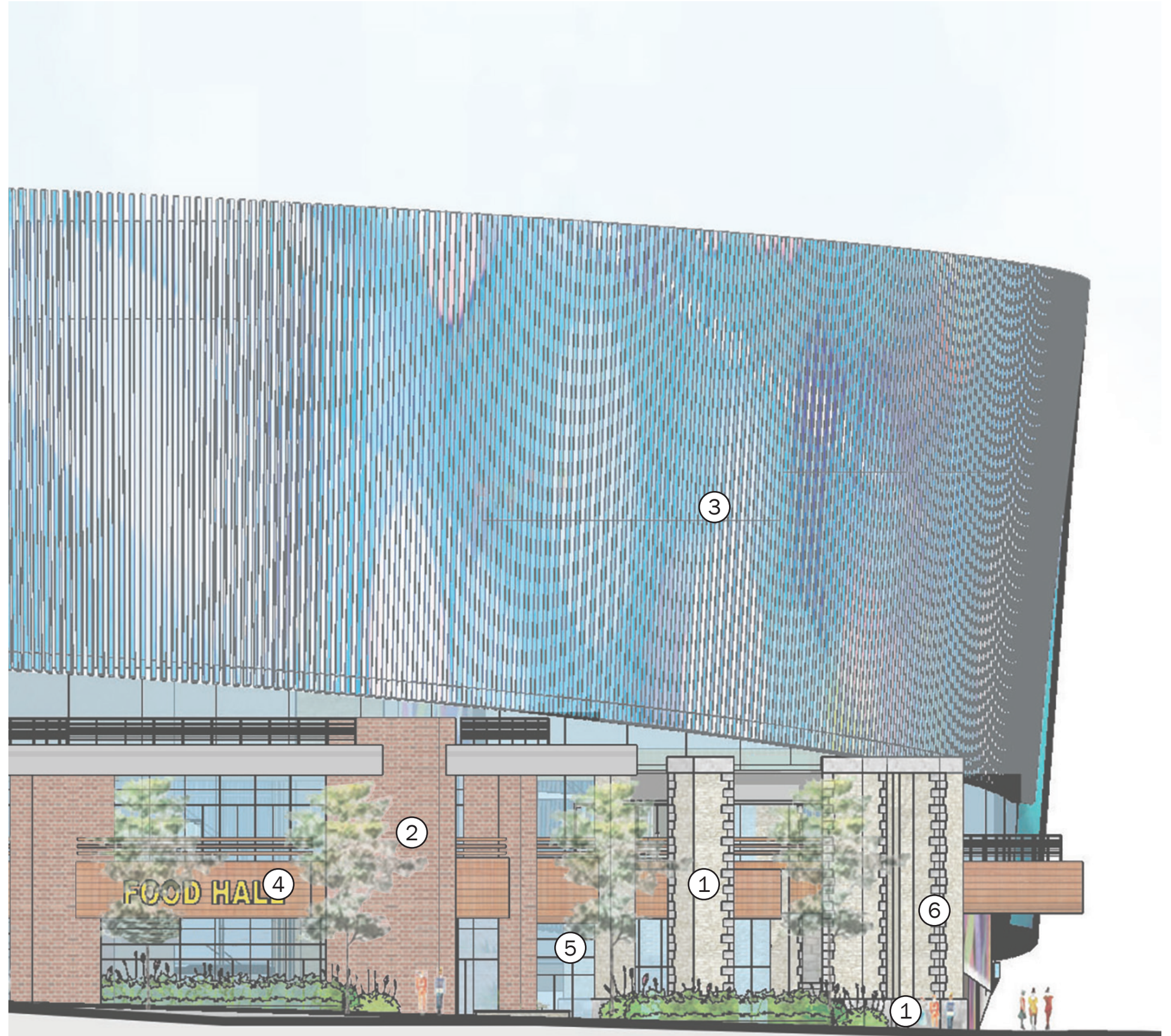
4. WOOD



5. STOREFRONT



6. MASONRY BASE ELEMENTS



DETAIL E -BUILDING MATERIALS: 4TH STREET EAST AT INGRAHAM



1. STOREFRONT



2. STUCCO WITH REVEALS



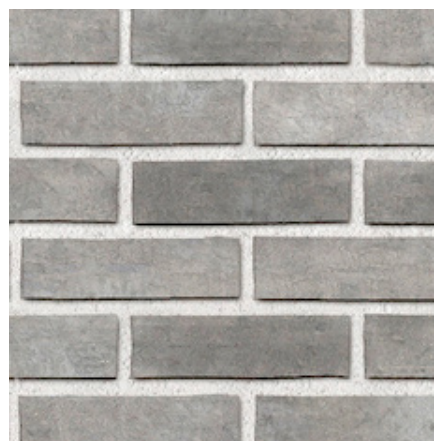
3. CUSTOM LOUVER/
SHADE SYSTEM



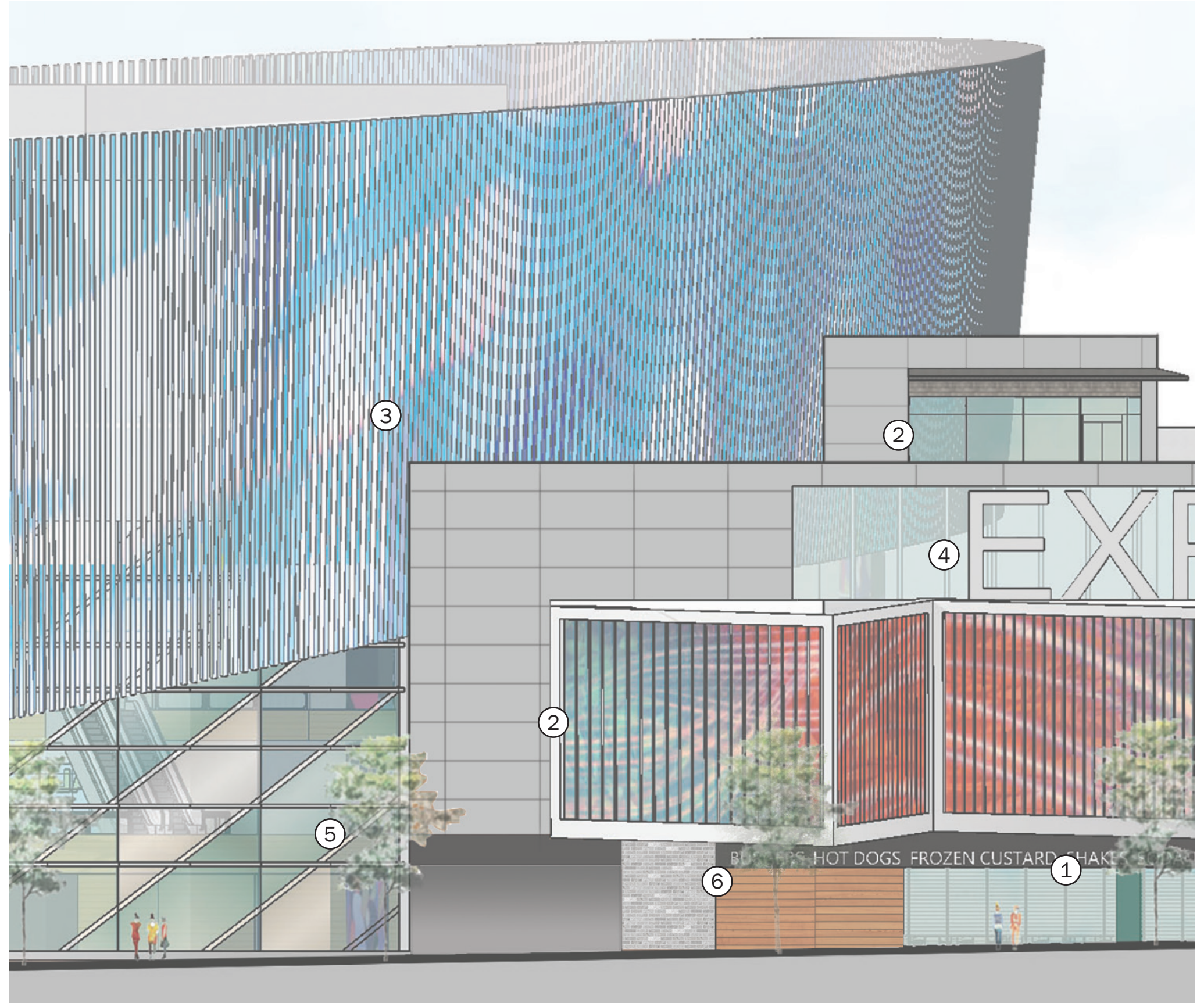
4. FRITTED GLASS WITH
SUPERGRAPHIC



5. CURTAIN WALL



6. BRICK - TYPE A



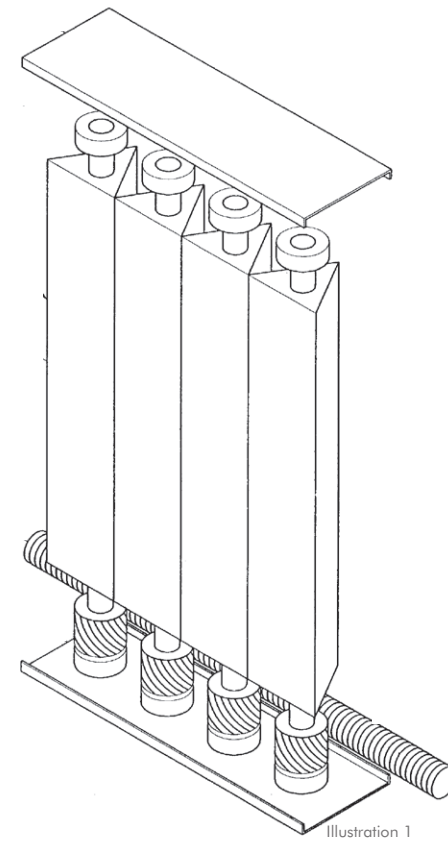
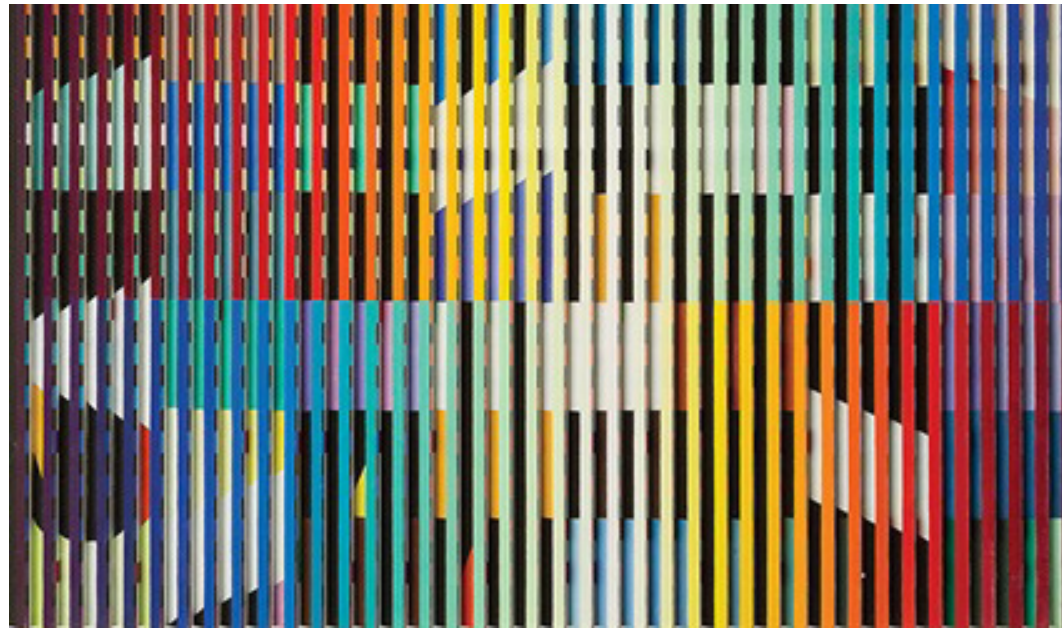
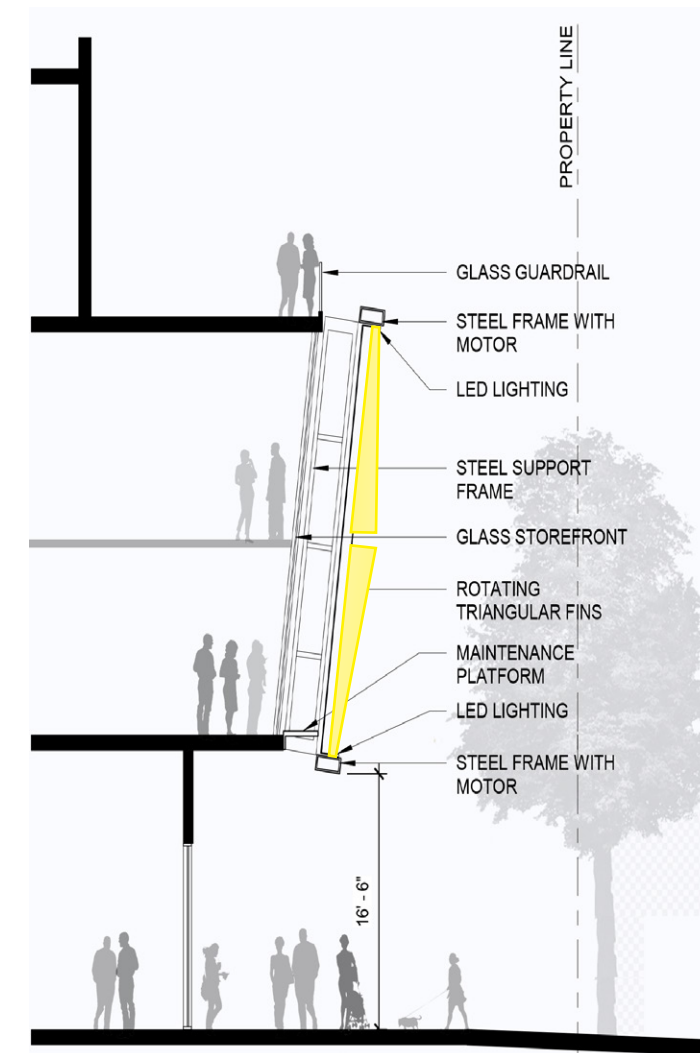


Illustration 1

KINETIC FACADE

along South Dakota Avenue NE

The kinetic façade is made of an array of vertical triangular tubes that rotate on programmed intervals as shown in illustration 1. The kinetic façade will be works of art, commissioned by the Foundation.

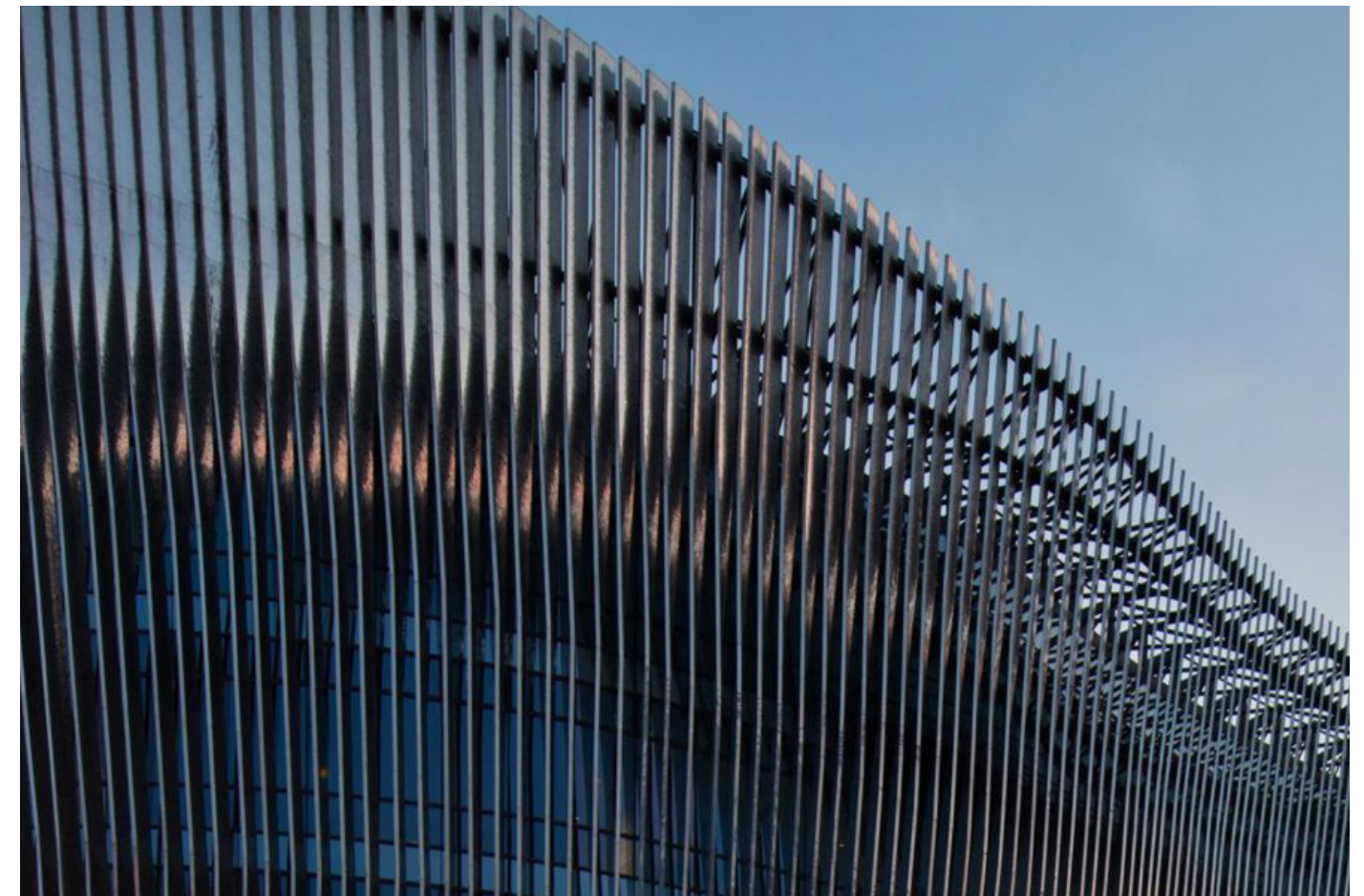
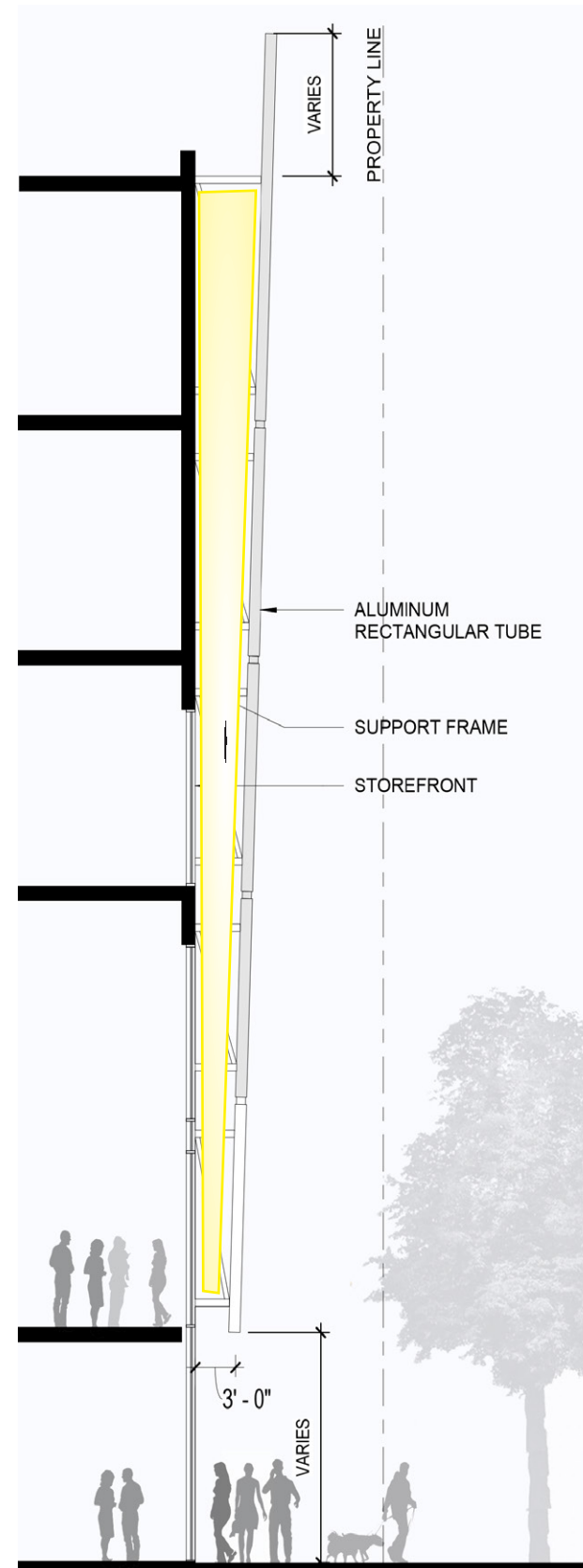


FACADE DETAILS - KINETIC FACADE SECTION | ART PLACE AT FORT TOTTEN

THE HUB'S FACADE

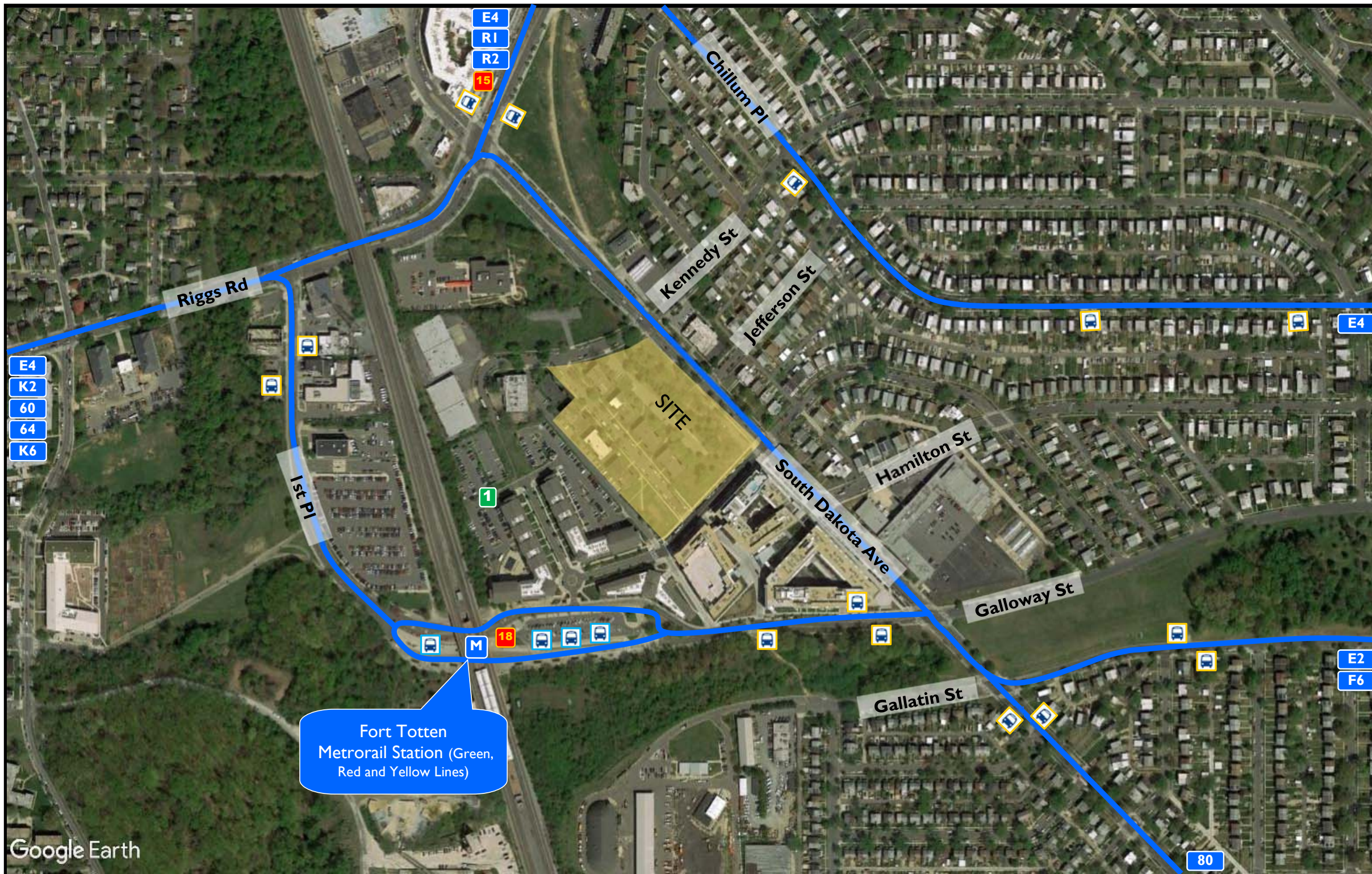
at the corner of South Dakota Ave NE
and Ingraham St

The Hub's exterior is clad with a series of vertical fins that function as rain and sun screens. The fins are formed of aluminum rectangular tubes. The material choice results in a diffuse reflection of the sky. Lighting is within the cavity between the scrim and the enclosure and will focus only on the building.



FACADE DETAILS - SECTION THROUGH THE HUB

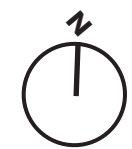
ART PLACE AT FORT TOTTEN

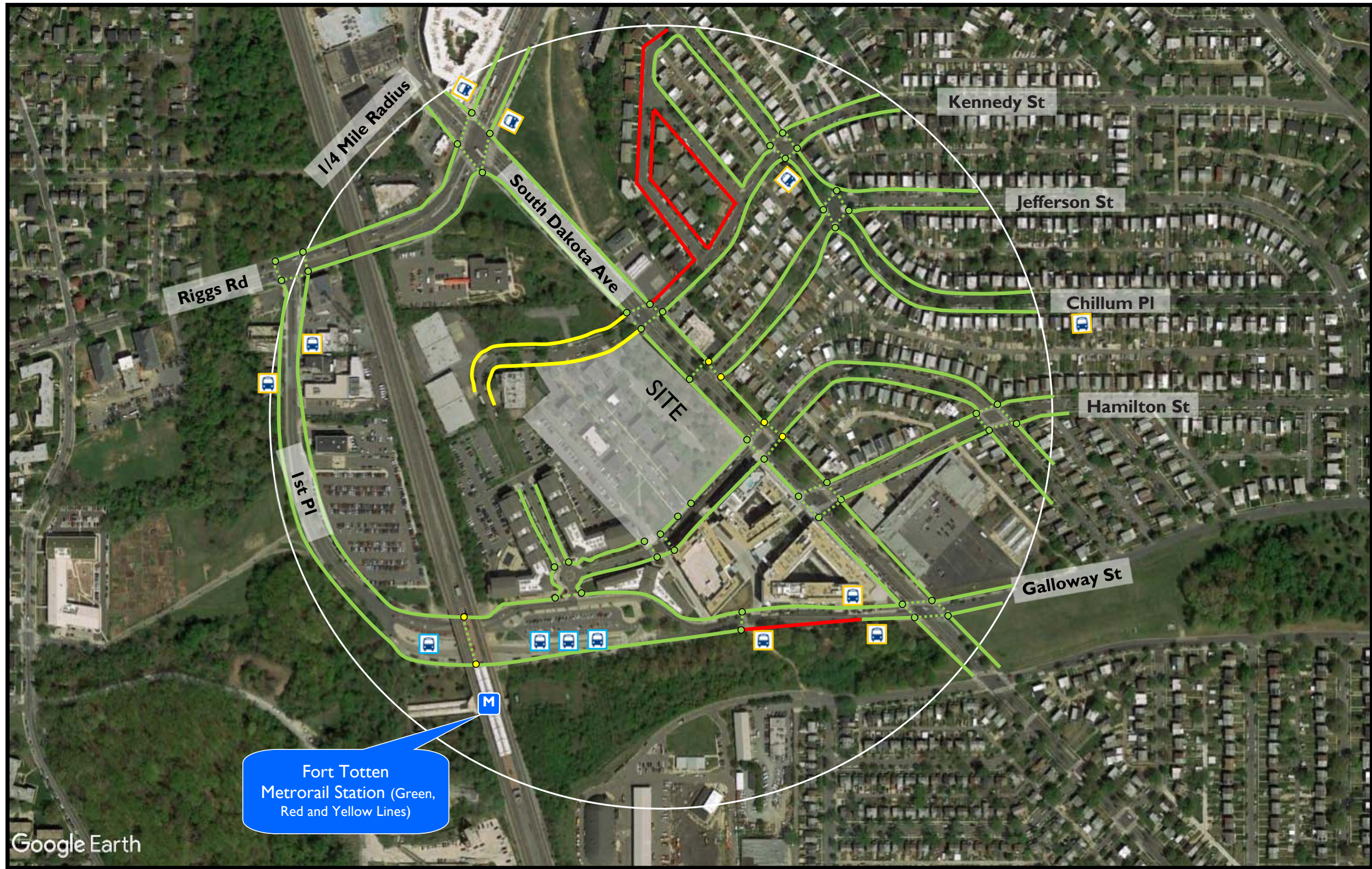


Google Earth

Fort Totten
Metrorail Station (Green,
Red and Yellow Lines)




- Bus Stop - Shelter No Shelter
 - XX** Metrobus Route Capital Bikeshare Locations (Number of Docks)
 - M** Metrorail Station (Green, Red and Yellow Lines)
 - Zipcar Locations (Number of Zipcars)
- *Zipcar locations change frequently accurate as of 2/14/19














Google Earth

Fort Totten
Metrorail Station (Green,
Red and Yellow Lines)

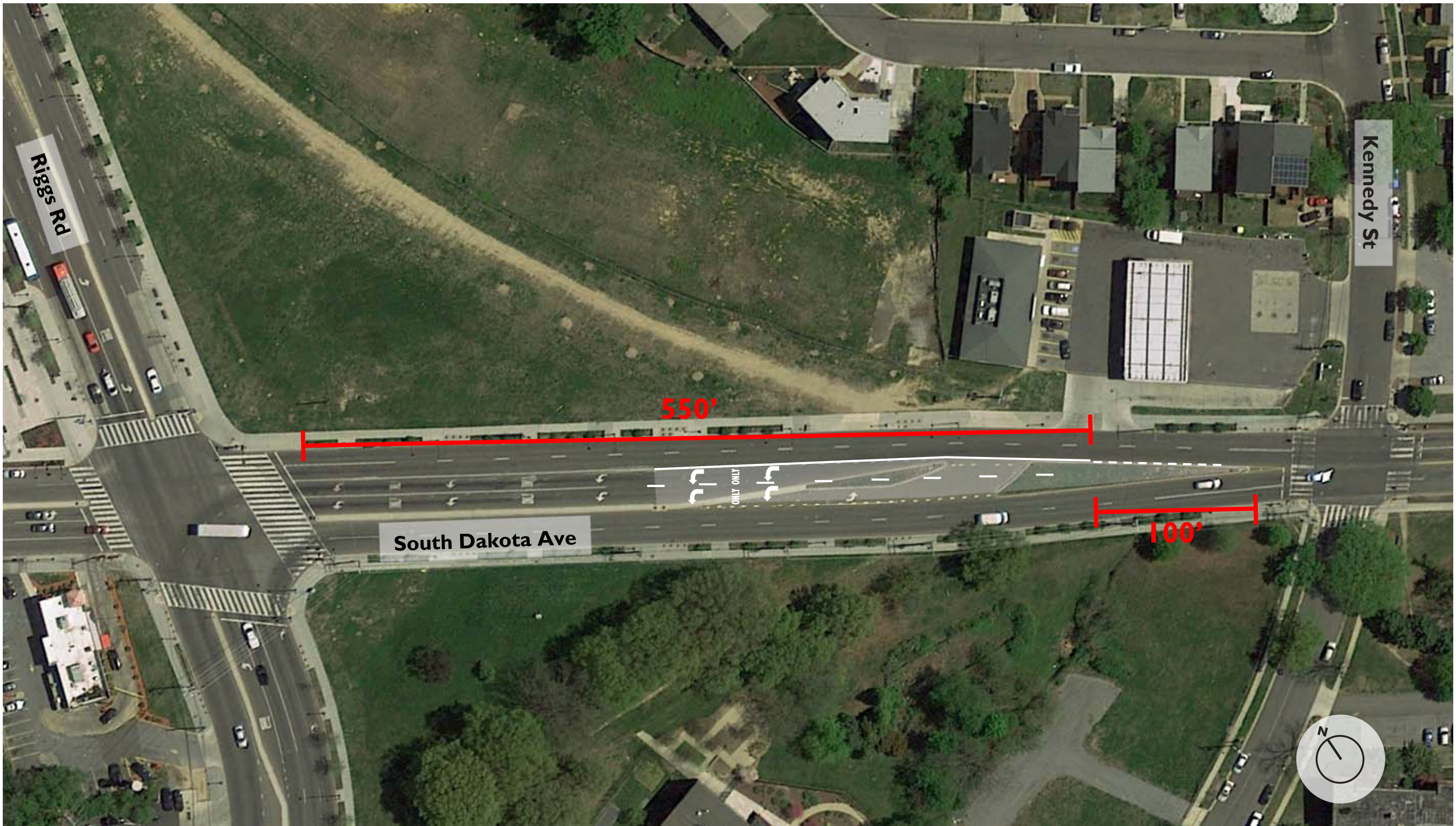
- Bus Stop - Shelter 
- Bus Stop - No Shelter 
- Metrorail Station 

-  Curb ramp in good condition
-  Curb ramp shared for multiple crosswalks OR missing warning strips
-  No curb ramps

-  Crosswalk in good condition
-  Crosswalk in poor condition (does not meet standards)
-  No Crosswalk

-  Sidewalk in good condition
-  Sidewalk in poor condition (does not meet standards)
-  No sidewalk





South Dakota Ave

550'

100'

RIGGS ROAD AND SOUTH DAKOTA AVENUE NORTHBOUND LEFT LAND TURN LANE EXTENSION



- BUS LOADING AND PARKING
- PICK-UP/DROP-OFF (PUDO)